

ZU Wi-Fi Connecting Steps

➤ Android Mobiles

1. Connect to the wireless network: ZU-WiFi.
2. Enter your Username in (Identity/User) field.
3. Leave (Autonomous Identity) field blank.
4. Enter your Password in (Password) field.
5. From (Phase 2 authentication) drop menu, choose (MSCHAPV2).
6. Leave all other fields as they are.

➤ iPhone Mobiles

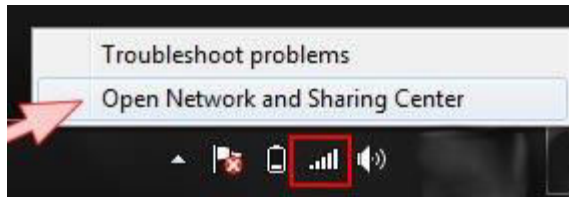
1. Connect to the wireless network: ZU-WiFi.
2. Enter your Username in (Username) field.
3. Enter your Password in (Password) field.
4. Join
5. Touch (Trust) to connect

➤ Windows 7 Laptops

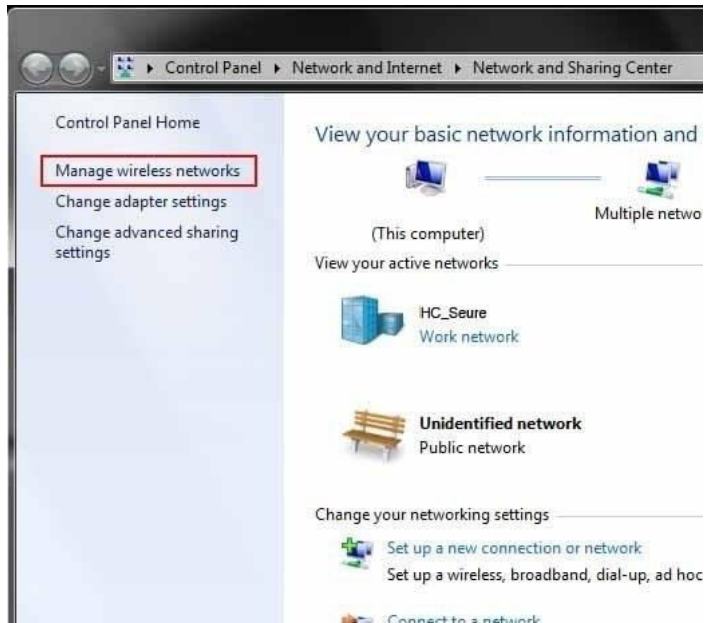
1. You'll see (ZU-Wifi) SSID but if you try to connect it will be unable to connect.



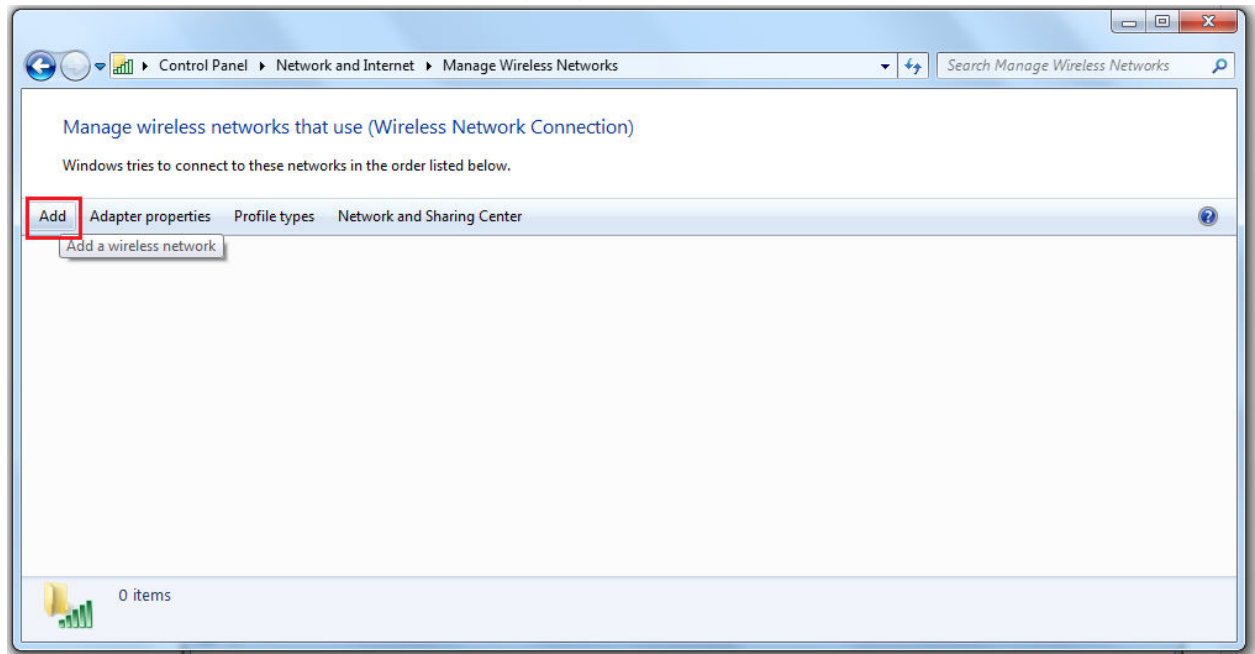
2. Open Network & Sharing Center
Right-click the wireless networks icon located on the Windows taskbar and select Open Network and Sharing Center.



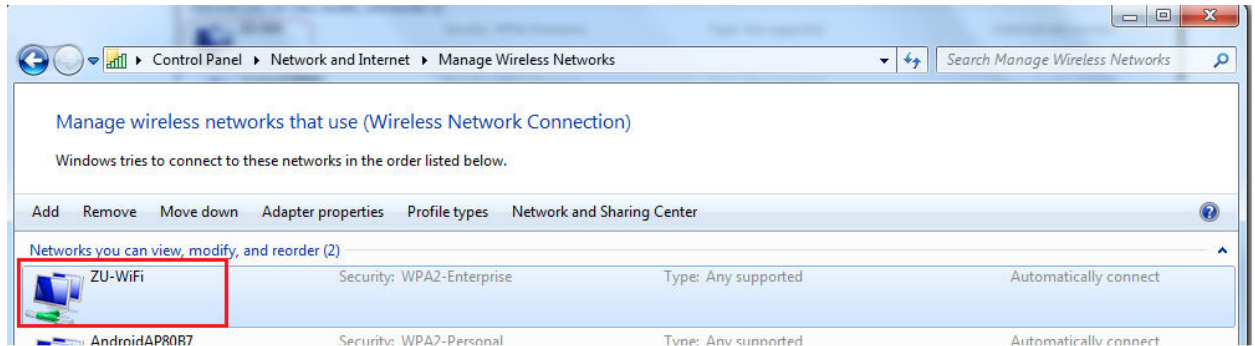
3. Click (Manage wireless networks)



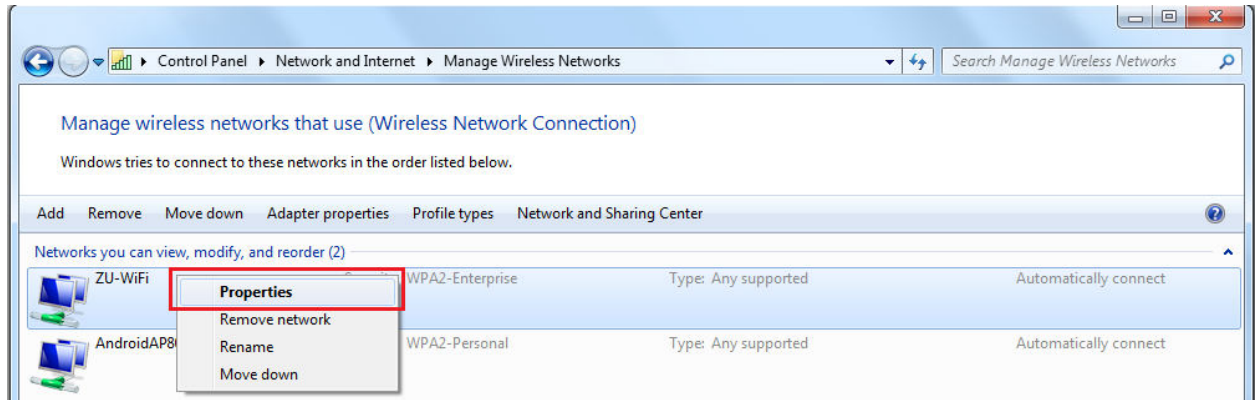
4. If there is no Wireless SSID shown, click on (Add) to add a wireless network.



But if there is (ZU-WiFi) shown

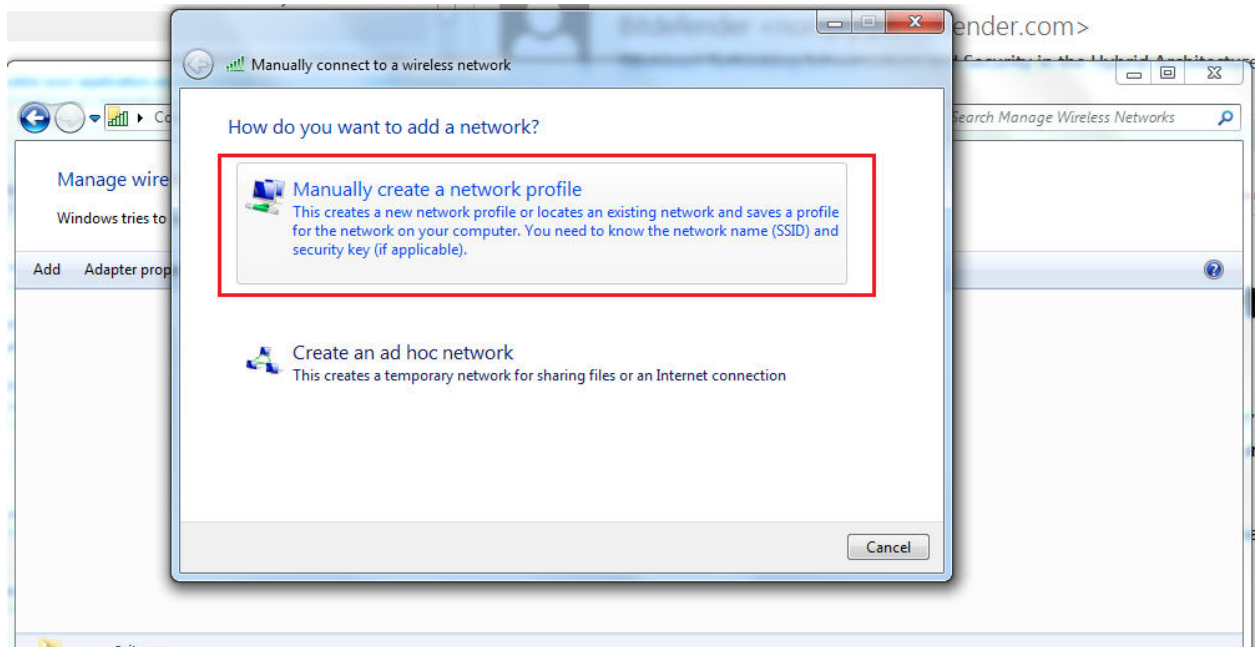


Then left-click to highlight it then right-click on it and choose (Properties)



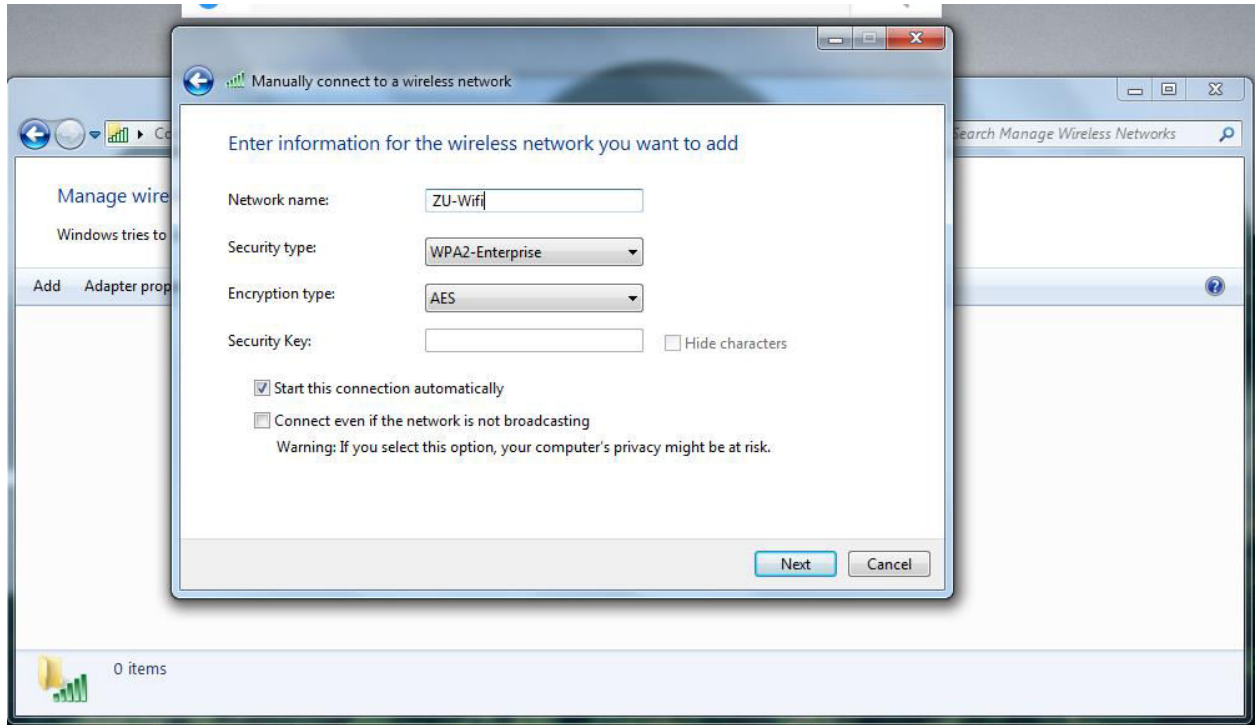
Here forward to Step (7), either complete from Step (3).

5. Click on (Manually create a network profile)

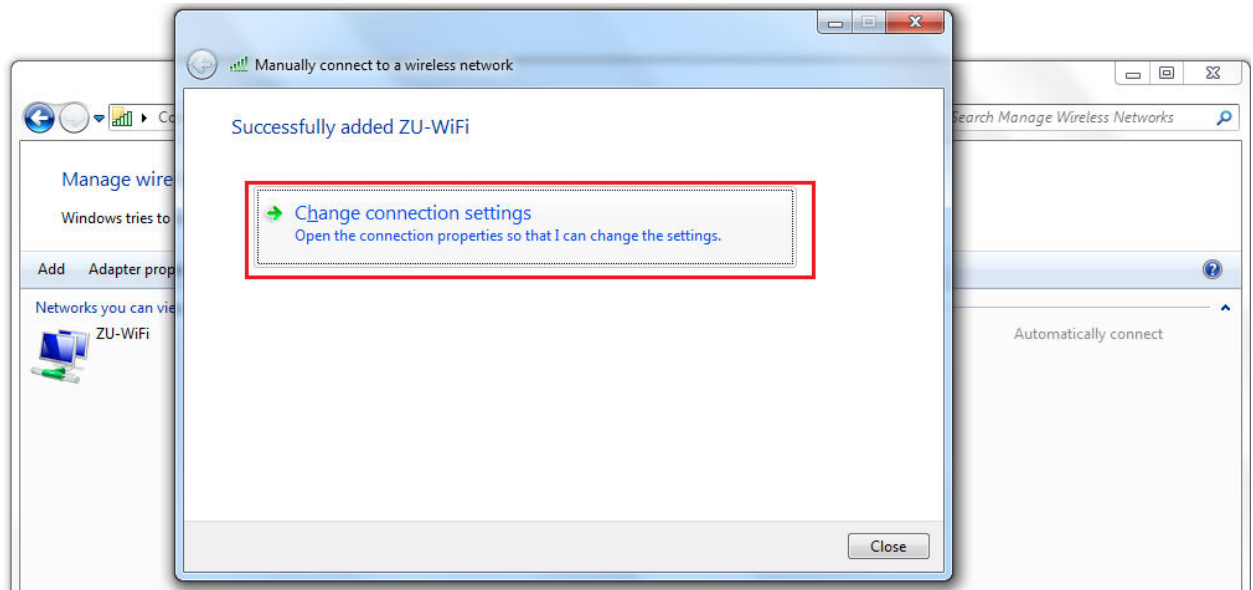


6. Fill and choose settings as in the picture and when you fill info it's case sensitive
Network name: ZU-WiFi
Security type: WPA2-Enterprise

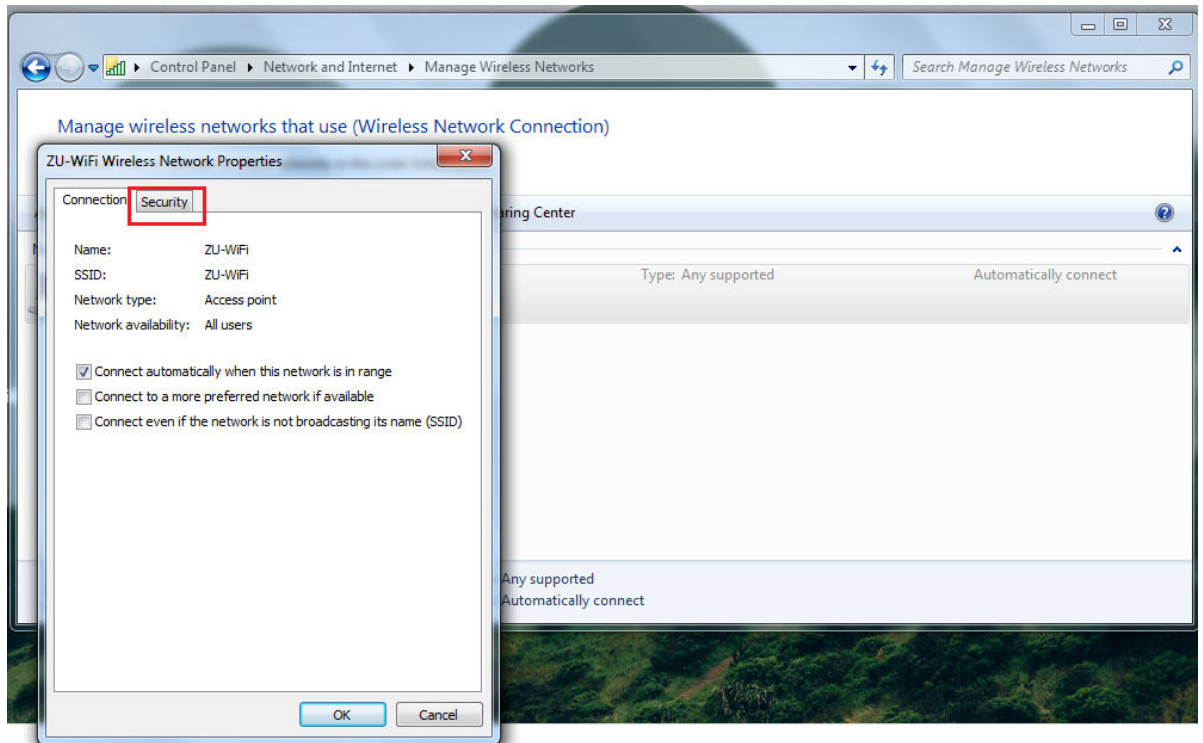
Encryption type: AES
And click (Next)



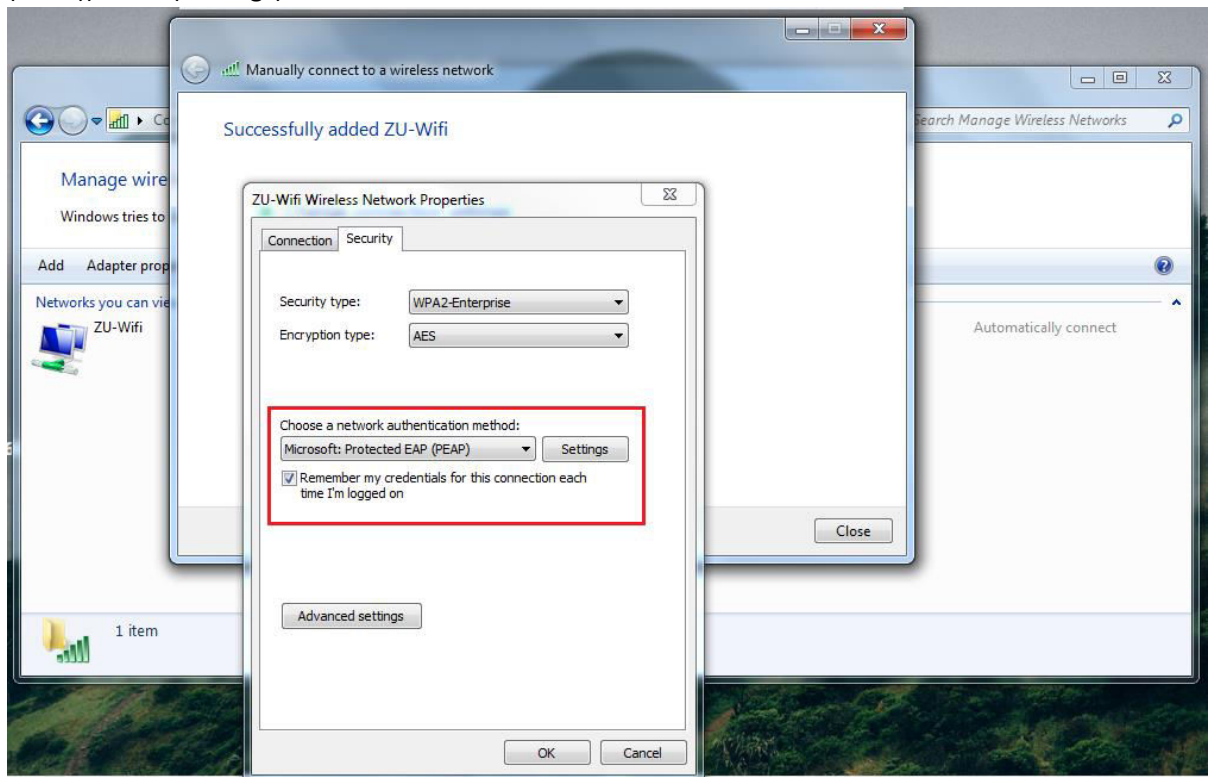
7. Choose to (Change connection settings)



8. Go to (Security) tab



9. In (Security) tab; network authentication method must be set to (Microsoft: Protected EAP (PEAP)). Click (Settings)

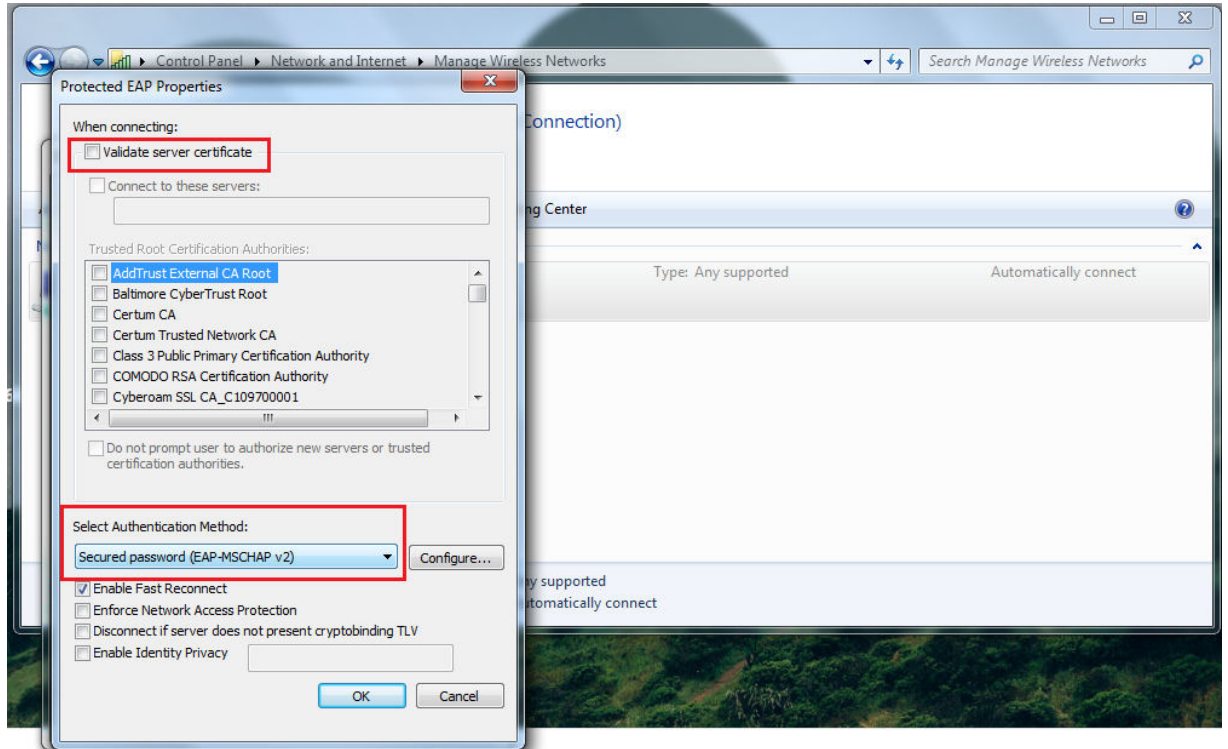


10. Here;

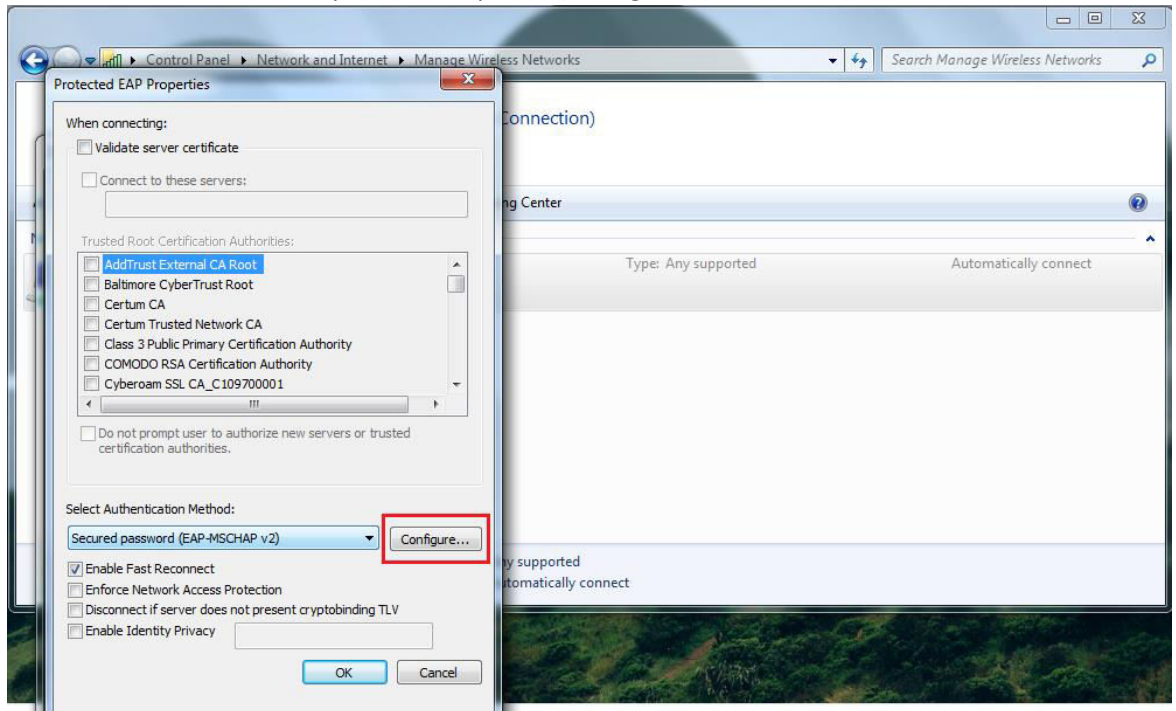
Uncheck (Validate server certificate)

And make sure for (Select Authentication Method) is set to (Secured Password (EAP-MSCHAP v2))

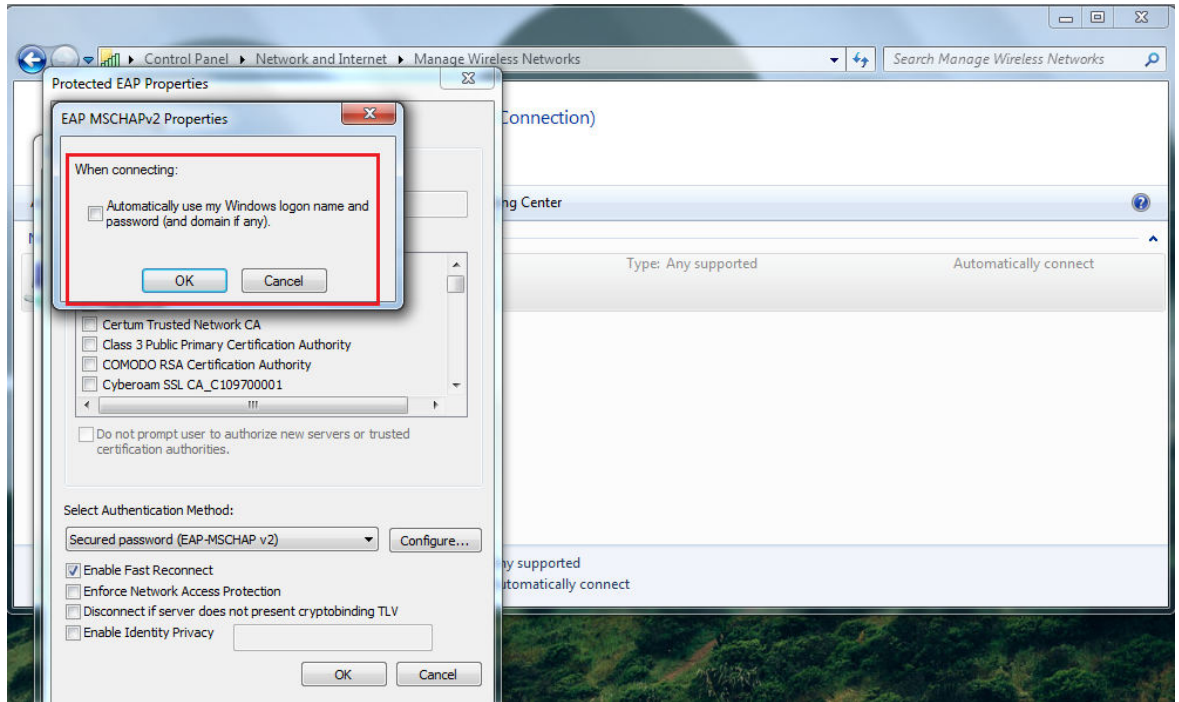
Stay in the same window for the next step



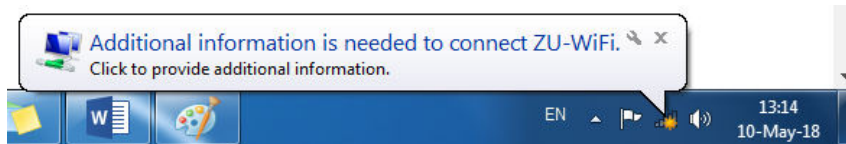
11. In the same window of the previous step click (Configure...)



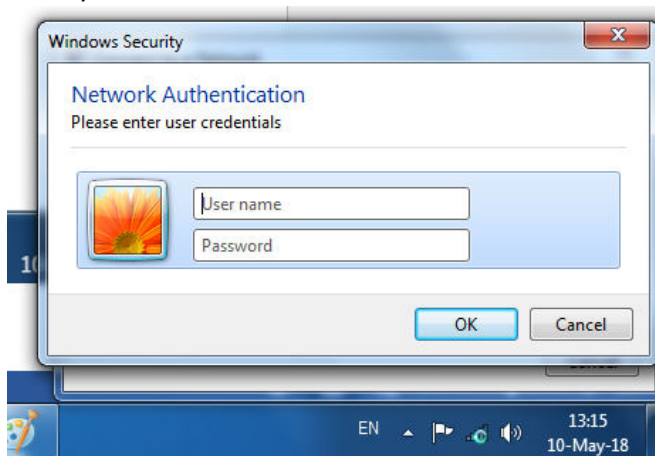
12. In the dialog box; uncheck (Automatically use my Windows logon name and password) and click (OK)



13. You'll receive this notification bubble, click on it



14. Enter your Username & Password



15. Now you are connected.



- **Windows 10 Laptops**
Only enter your Username & Password